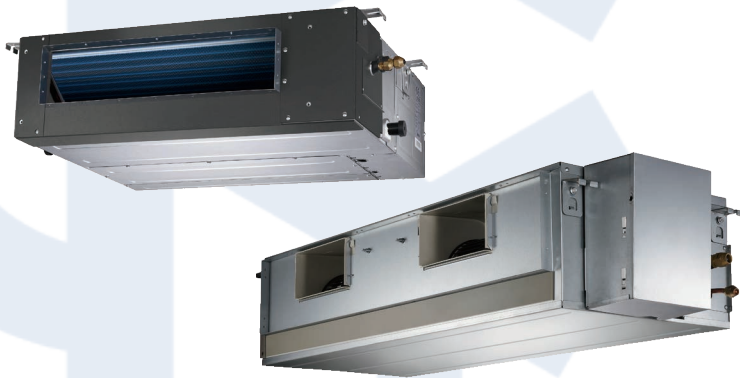




# YORK® Ducted Fixed Speed

YEGE 18 to 36 MEDIUM STATIC HEAT PUMP and  
 YGGE 48 to 55 and YMGFZH096 HIGH STATIC HEAT PUMP  
 A complete range from 18000 btu/h to 55000 btu/h and 96000 btu/h



## Features

- Reserved remote on-off and alarm ports
- Compact size
- High velocity air flow
- Low noise
- Washable air filter
- Auto-restart
- Universal spares
- High efficiency compressor
- 3-minute protection
- Valve protection cover
- Easy installation & maintenance
- Sturdy & durable build
- Drain pump (optional)
- Wired controller (optional)

## Remote Control



- 5 operation modes: Auto/Cool/Dry/Heat/Fan
- Multi-speed fan setting: High/Medium/Low/Auto
- 24-hour timer setting
- Large LCD display
- Auto-restart function

# YE(G)GE 18 to 55 BZE(O)--MO(S)RX YMGFZH096BAN-BG1

A complete range from 18000 btu/h to 55000 btu/h and 96000 btu/h



Auto Restart



Self Diagnosis



24-Hour Timer



Muti-Speed Fan



3-Minute Protection



Washable Filter



## Technical features

York set model		YEGE18BZE--MOWX	YEGE24BZE--MOWX	YEGE36BZE--MSWX	YGGE48BZO--MSWX	YGGE55BZO--MSWX	YMGFZH096BAN-BG1	
York indoor model		YEGE18BXE--M-WX	YEGE24BXE--M-WX	YEGE36BXE--M-WX	YGGE48BXO--M-WX	YGGE55BXO--M-WX	YMGFXH096BAM-G1	
York outdoor model		YUGE18BYE--MO-X	YUGE24BYE--MO-X	YUGE36BYE--MS-X	YUGE48BYO--MS-X	YUGE55BYO--MS-X	YMGFYH096BAN-B-1	
Power supply	V-ph-Hz	220-240-1-50	220-240-1-50	220-240,50,1	380-420-3-50	380-415-3-50	380-415-3-50	
Max. input consumption	W	2950	3450	4250	6300	7500	14400	
Max. input current	A	15	18	20.5	10.9	12.6	23.7	
Cooling/Heating	Capacity	Btu/h	18000/19000	24000/26000	36000/39000	48000/52000	56000/62000	95600/105000
	Input	W	1970/1760	2650/2500	3900/3500	5410/4220	6500/5300	8230/10300
	EER/COP	W/W	2.69/3.16	2.65/3.05	2.71/3.27	2.6/3.61	2.53/3.43	3.4/3.01
Indoor fan motor	Qty		1	1	1	1	2	
	Input	W	107/65/52	163/93/75	238/198/167	480/420/360	588/480/420	990*2
	Capacitor	µF	3.5UF/450V	3.5UF/450V	5UF/450V	10µF/450V	10µF/450V	20µF/450V
	Speed(Hi/Med/Lo)	r/min	1150/800/700	1000/750/680	860/830/730	750/705/655	860/750/705	1130/990/840
Indoor air flow (Hi/Med/Lo)	m <sup>3</sup> /h	816/546/-	1260/808/-	1836/1383/1160	2809/2554/2272	3150/2809/2554	5100/4800/4400	
ESP	Rated	Pa	25	25	37	50	50	196
	Range	Pa	0-60	0-80	0-100	0-200	0-200	150-250
Indoor noise level (Hi/Med/Lo)	dB(A)	43/37/36	45/40/38	48.8	51/49/46	52/50/48	61/-/-	
Indoor unit	Dimension (WxDxH)	mm	920x635x210	920x635x270	1100x774x249	1200x625x380	1200x625x380	1443x450x846
	Packing(WxDxH)	mm	1135x655x290	1150x655x350	1305x805x305	1485x675x450	1485x675x450	1549x476x917
	Net/Gross weight	kg	24/28	26.5/32	32.2/39.4	46/52.3	45.9/52.2	105/120
Design pressure	MPa	4.2/1.5	4.2/1.5	4.2/1.0	4.2/1.5	4.2/1.5	4.4/2.6	
Drainage water pipe diameter	mm	ODØ25						ODØ41
Room temperature	Cooling/Heating	°C	17-32/0-30	17-32/0-30	17-32/0-30	17-32/0-30	17-32/0-30	/
Qty' per 20' /40' /40'HQ	Indoor		134/270/310	108/216/252	77/161/184	59/124/125	59/124/125	30/64/64
Compressor	Type		ROTARY	ROTARY	Scroll	Scroll	Scroll	Scroll
	Thermal protector position		INTERNAL	INTERNAL	Internal	Internal	Internal	Internal
	Capacitor	µF	50UF/450V	60UF/450V	60UF/450V	/	/	/
Outdoor fan motor	Qty		1	1	1	2	2	2
	Input	W	91.8/79.2	144	293.3/261	162 x2	162 x2	621+587
	Capacitor	µF	3UF/450V	3UF/450V	10	3.5UF/450V x2	3.5UF/450V x2	25µF/450V x2
	Speed	r/min	890/830	860	850/770	765	765	1180/1230
Outdoor noise level (sound pressure)	dB(A)	62	62	63.4	63	63	67	
Outdoor unit	Dimension(WxDxH)	mm	770x300x555	845x363x702	946x410x810	900x350x1170	900x350x1170	1260x908x700
	Packing(WxDxH)	mm	900x345x585	965x395x755	1090x500x875	1032x443x1307	1032x443x1307	1320x1060x730
	Net/Gross weight	kg	36.5/38.8	52.7/56.1	79.5/85.3	93.2/105	97/108	187/204
Refrigerant type/ Quantity	Type		R410A	R410A	R410A	R410A	R410A	R410A
	Charged volume	kg	1.5	1.8	2.5	3.25	3.2	6.0
Refrigerant piping	Liquid side/ Gas side	mm(inch)	Ø6.35/ Ø12.7(1/4"/1/2")	Ø9.52/ Ø15.9(3/8"/5/8")	Ø9.52/Ø19(3/8"/3/4")	Ø9.52/Ø19(3/8"/3/4")	Ø9.52/Ø19(3/8"/3/4")	Ø9.52/Ø25
	Max. pipe length	m	25	25	30	50	50	50
	Max. difference in level	m	15	15	20	25	25	30
Ambient temperature	Cooling/Heating	°C	18-43/-7-24	18-43/-7-24	18-43/-7-24	18-43/-7-24	18-43/-7-24	17-52/-7-24
Qty' per 20' /40' /40'HQ	Outdoor unit		166/344/344	102/216/216	44/96/144	27/57/108	27/57/108	24/54/54

Nominal cooling capacity based on : - Indoor Air Temp. 27°C DB / 19°C WB - Outdoor Air Temp. 35°C DB

Nominal heating capacity based on : - Indoor Air Temp. 21°C DB - Outdoor Air Temp. 7°C DB/6°C WB